

YOUTH OPPORTUNITIES & RESOURCE MENU



Latest Update: May 15th, 2023

www.wethryve.org

Supported by the Youth Violence Prevention Center-Kansas City (YVPC-KC)

Our Vision

Empowered Youth Thriving and Prospering in a Safe Community.

Our Mission

To empower youth to be hopeful and thrive by connecting youth and families to opportunities that foster resiliency and success through coordinated systems and engaged communities of support.

What are community programs?

Community programs are activities, events, opportunities, and services that bring about positive community changes, services and supports.

What are community resources?

Community resources are valuable tools in our community (such as people, organizations, and funds) used to improve the quality of life within our community.

What age groups do the listed programs serve?

Community programs in this guide serve youth between the ages of **12-18.**

What is the ThrYve Systems Advisory Board?

The ThrYve Systems Advisory Board brings together community partners from different sectors to collectively address factors that prevent and reduce youth violence.

What is the Youth Violence Prevention Center-Kansas City (YVPC-KC)?

Designated as one of five YVPCs in the country, YVPC-KC is an academic-community collaboration that advances the science and practice of youth violence prevention. Through local partnerships, the YVPC-KC develops, implements, and evaluates innovative strategies to prevent violence and create safer, healthier family and community environments for youth.

Table of Contents

Featured Partners from ThrYve Systems Advisory Board

Youth Entrepreneur Exchange, The Connect KC, ThrYve Youth Advisory Board
Avenue of Life, Young Women on the Move, KC United,
Youth Ambassadors
Heartland 180, Camp Fury, Boys and Girls Club,
Oakridge Teen Programs
K-12 Initiative, LEAD UP,
Kids On Campus KCKCC. KCK Saturday Academy

Community Programs

Pro-X
YMCA
UMKC Pharmacy Camp
Gen Cyber Camp
Three Trails Camp, Police Athletic League, KC Police Athletic League
KCKPD Summer Youth Academy
KC Farm School Farmers On the Rise Program
First a reader then a leader
KCYA Art Camp, Ailey Dance Camp
Camp Hope, Urban Scholastic Center
Rosedale Development Association.

Community Resources

Food Pantries in Wyandotte County
Vibrant Health
KC Farm School Lets Grow Wyandotte
Parkwood Pool
Parkwood Pool Partnership programs
Lifeguard Summer Job Information
Wyandotte County Spray Parks.

Application Deadlines

No Deadline to Register

Avenue Of Life
KC United
Heartland 180
Lexia Reading
Career Launch-Boys and Girls Club
Money Matters-Boys and Girls Club
YVC Summer of Service
Police Athletic League
KC Police Athletic League
KCKPD Summer Job Program
Today a Reader; Tomorrow, a Leader
Urban Scholastic Center
KCKKPD Academy

Programs With Deadlines

Youth Entrepreneur Exchange: Registration **Closes May 15**
Youth Ambassador Program: Registration **Closes June**
Young Woman on the Move: Enrollment **Closes May 5**
Camp Fury: Registration **Closes June 1**
K-12 Initiative Accelerate Cancer Education: Registration **Closes May 15**
K-12 Initiative Summer Camp: Registration **Closes June 1**
Health Science Academy: **Closes June 1st at 11:59PM**
Atomic Blast Boys and Girls Club: Registration **Closes June 1**
LEAD UP Summer Academy: (TBA)
Rosedale Summer Employment: Application **Due May 31**
Rosedale Rainbow Summer: Payment **Due May 31**
Rosedale Camp Leaders: Applications **Close May 23**
KCKCC: Enrollment **Closes May 31 for all camps**
YMCA Camp Wood: Registration (TBA)
Pharmacy Camp: Registration **Closes June 16**
Gen-Cyber Camp: Registration **Closes July 1**
KC AILEY Camp: Registration **Closes June 3rd**
Pro-X **Application Closed**

Closes When Full

Oak-Ridge Empowerment Zone: **Max 16 Youth**
Youth Farm School Apprenticeship: **Max 12 Youth**
KCYA Art Sampler Camp: Closes when spots are full.
Camp Hope: Closes when spots are full.

Programs for ThrYve-KU Enrolled Youth

Youth Entrepreneur Exchange

The Youth Entrepreneur Exchange program exists to promote youth entrepreneurial skills, leadership development, and business creation potential through innovation, creativity and participation in the local marketplace.

Program dates are **June 13 to July 20th.**

Location: 3148 Parallel Pkwy Kansas City, KS 66104

Free for all ThrYve Participants

The Connect KC

Connecting youth with **transportation** to out-of-school-time social, educational, and career-prep events.

Scan the QR code for more information.



ThrYve Youth Advisory Board

Our Youth Advisory Board is for ThrYve participants who want to impact their community and gain leadership skills. There are YAB members from each school site we serve. Being part of our ThrYve Youth Leadership team can positively impact your community and its future, contribute to the success of the program, make positive impact on peers, serve your community, expand your network and meet people and leaders with similar interests and goals. This summer, the ThrYve YAB will meet **every Wednesday from 1:00pm - 5:00pm**

Location: 3148 Parallel Pkwy Kansas City, KS 66104

Featured Partners from the ThrYve Systems Advisory Board

All ages

Avenue of Life

Make food packs that will be distributed throughout the community.

Anytime Tuesday through Thursday from 8:00 AM to 4:00 PM.

Location
Equipping Center
500N 7th Street Trfy
Kansas City, KS, 66101

Happy Bottom Diaper Distribution. Help Distribute Diapers to people in need in the KCK area

We gather diapers orders on Wednesday evening from 4:00 - 6:30 PM

Location
Equipping Center
500N 7th Street Trfy
Kansas City, KS, 66101

Teach a Class

Classes take place twice a week, Wednesday evening from 4:00 - 8:00 PM and Saturday morning from 8:00 AM - 1:00 PM.

Location
Equipping Center
500N 7th Street Trfy
Kansas City, KS, 66101

And Many More Opportunities Here:



Ages 11-18

YOUNG WOMEN
ON THE MOVE
mind • body • spirit



DESIGN AND BUILD

Camps are M-Th from 8:30-3:30 at YWOM and a meal will be provided.

All Ages

Camps are **free** but caps at 30 campers per month

Each camp is for middle schoolers and highschoolers

June

June 12-15

June 19-22 *Featuring Madame President*

June 26-29

July, Featuring Lyric Opera

July 10-13

July 17-20

July 24-27

LEARN
MORE
HERE:



Ages 5-16



KC United! Youth Sports & Education Initiative
2400 North 20th Street, Kansas City, KS 66104
Kcunitedsports10@gmail.com | 913-999-8181

READING

KC United! provides basic reading supports for all participants who need it and desire it! Sessions will be 1:1 with an qualified instructor whose whole purpose is to help the student gradually make progress (in partnership with the local school district) from where they are (based on current reading grade) to where they can be.

MATH

KCU! provides age appropriate math programs (in partnership with the local school district) for all participants who need it and desire it. Sessions will be 1:1 with a qualified instructor whose whole purpose is to help the student gradually make progress from where they are (based on current reading grades) to where they can be.

SCAN FOR MORE INFORMATION:



**Ages
9-14**



DREAM BIG!

MARY ANN FLUNDER/KCU!

6TH ANNUAL SUMMER

S.T.E.A.M. SPORTS & ARTS CAMP!

HyVee Arena, KCMO

60 STUDENTS- GRADES 3RD-8TH, WILL GET
THE OPPORTUNITY TO HAVE A
'TRANSFORMATIONAL' SUMMER
EXPERIENCE!

(20) 3RD-4TH, (20) 5TH-6TH, (20) 7TH-8TH

START
JUNE 5,
2023

END
JUNE 30,
2023

CAMP FEE

\$25.00

Activities

- ✓ S.T.E.A.M.
- ✓ YOUTH LEADERSHIP!
- ✓ SOCIAL/EMOTIONAL SKILLS!
- ✓ PHYSICAL ACTIVITY!
- ✓ WEEKLY FIELD TRIPS!

**KC UNITED! / MARY ANN
FLUNDER SUMMER S.T.E.A.M.
SPORTS & ARTS CAMP**

REGISTER NOW! SPACES ARE LIMITED!

MENTALLYDREAMING@GMAIL.COM

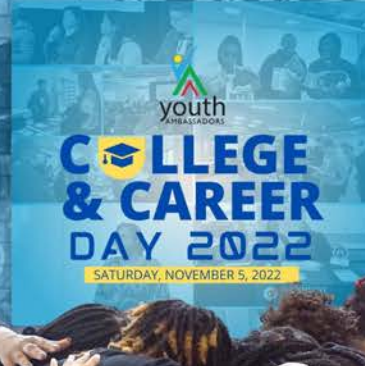
More Information...

www.kcunited.org

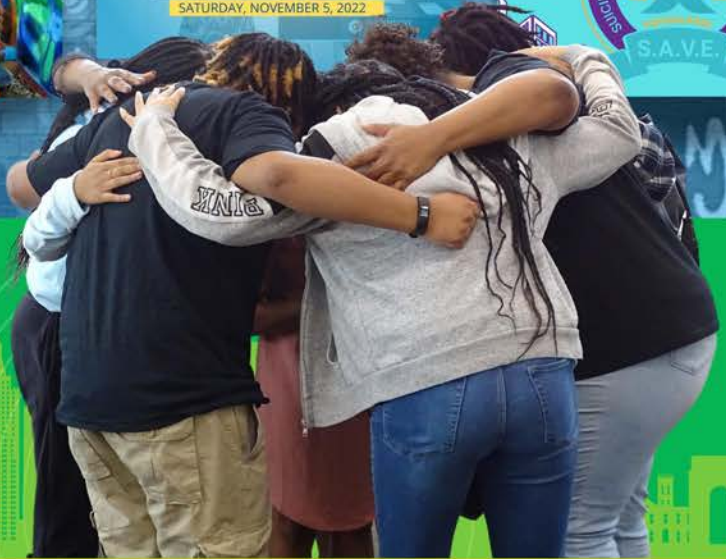
Scan for more information here:



AMBASSADOR PROGRAMS



**FUTURE COMMUNITY
LEADERS WILLING
& ABLE TO WORK 4
Positive Change**



(816) 793-3833



apply@youthambassadorskc.org



5809 Michigan Avenue
Kansas City, MO 64130



YOUTH AMBASSADORS

Youth Ambassadors is a strength-based youth educational employment organization.

WWW.YOUTHAMBASSADORSKC.ORG



Ages 14-18

TEEN PEACE SUMMIT 2023

**WE STAND
STRONG**

JULY 20, 2023

"THE TIME IS NOW, BE THE CHANGE"

LOCATION: UNIVERSITY OF MISSOURI-KANSAS CITY

**Find more
information here:**



OAK-RIDGE Teen Programs

Ages
11-18

OAK-RIDGE Empowerment Zone

A newly designed program for students in grades 6-8 that encourages student empowerment, academic student success, entrepreneurial spirit and fosters students to participate in community service. Students will receive strong academic support in the areas of Literacy (reading7writing) and mathematics during the morning hours and have empowerment sessions in the afternoon. These empowerment sessions will strengthen their abilities by allowing them to foster opportunities in mindful character building by physically engaging with community leaders from the Greater Kansas City Area by the way of speakers, fieldtrips and community service activities. Students will also participate in entrepreneurial lessons and activates that will encourage their own creativity. This is a fast paced 6 week opportunity for students with motivation, creativity, discipline and who strive for excellence. Special Note: There are 16 slots for this program given on a first come bases.

Lexia Reading

Lexia® PowerUp Literacy® accelerates literacy gains for grades 6–12 students at risk of not meeting College- and Career-Ready Standards. Power Up is proven to be up to five times as effective as the average middle school reading intervention; PowerUp enables students to make multiple years of growth in a single academic year.

Designed to respect the time and maturity of the adolescent learner, PowerUp immerses students in an age-appropriate learning experience tailored to their strengths and weaknesses. PowerUp's adaptive instructional model maximizes student learning and provides motivational tools to minimize the time required for students to start mastering grade-level skills.

Ages
11-18

Learn more about these programs and more here:



Ages
14-18



Throughout this intense program, girls grow even more courageous, strong, confident and capable, ready to become our change-makers for tomorrow and role models for their fellow Girl Scouts. This program is for all Girl Scouts (and non-Girl Scouts), regardless of career aspirations.

This program is for Girl Scouts (and non-girl scouts) currently in 9th, 10th, 11th and 12th grades. No exceptions will be made.



Follow on Facebook for updates

Date: June 11-16, 2023
Cost: \$475 (scholarships available)
Register using this QR Code:



Heartland

180

To passionately empower youth to improve their lives by accepting personal accountability and to continuously strive toward the goal of achieving their full potential, "one degree" at a time.

Ages
11-17

Growing Into Manhood

Start Date June 12

Led by Coach Moses Wyatt and Shawn

Location: Newbins

1917 Quindaro KCK 66104

Time: 5-7pm

Cost: FREE

The 180 Degrees Program Growing Into Manhood curriculum is a social-emotional learning curriculum for African American young men ages 11 – 17. Designed for African American men by a team of African American leaders, the curriculum provides both mentoring and life skill development. The curriculum may be used within an academic or non-academic setting and promotes both academic and life skill learning among students. The Growing Into Manhood curriculum supports the educational and life skill goals of all African American males.

The textbook, filled with African American culture and history, is engaging and captivating. Curriculum content is aligned with Dr. Janice Hale's strategies from her work Learning While Black: Creating Educational Excellence for African American Children.

Scan for more information:



Connect with us:

www.heartland180.org

913-521-3311

h180program@heartland180.org

Ages
5-12



BOYS & GIRLS CLUBS
OF GREATER KANSAS CITY

Ages
13-18

ATOMIC BLAST!

Kids ages 5 – 12 learn math and science skills through fun activities and nurture a love of learning through reading comprehension and writing exercises.

CAREER LAUNCH

CareerLaunch encourages Club members ages 13 to 18 to assess their skills and interests, explore careers, make sound educational decisions and prepare to join our nation's work force.

Our 9-week program runs
June 5, 2023 – August 4,
2023, Monday – Friday,
7am to 6pm.

Affordable with low to no
program fees.
Call 816-462-0172
for details.

MONEY MATTERS

The financial decisions that young people make today will impact their future. That's why Boys & Girls Clubs pair youth with supportive Club mentors and volunteers to develop the financial skills that can lead to workplace readiness, lifelong financial stability and overall success.

Ages
13-18



All of these programs *and more* at bgc-gkc.org

Scan the QR code to learn more



K-12 Initiative Summer Camps

Summer Medical and Sciences Academy is an intensive 5-week health pipeline experience. Interactive learning and career exploration are integrated through four learning modules: Bioethics, Physiology, Risk Factors, and Math. Students present research projects to medical and community stakeholders at the closing ceremony in mid-July. Students will be paid at the end for their participation! For 2023, the camp is from June 19th-July 21st. The camp is held on Mondays through Fridays from 9am-3pm.

Residential Camp Students participate in an immersive residential experience in which they in college campus dormitories with their fellow student colleagues and learn about college, receive hands-on academic activities, and workshops.

Camps are held at the University of Kansas Medical Center and Kansas City Kansas Community College. Depending on summer, students travel to various locations throughout Greater Kansas City to gain valuable hands-on experiences. Transportation is provided for students. Residential has previously been held at the University of Kansas, Avila University, and the University of Missouri-Kansas City.

Ages
16-18

The University of Kansas Cancer Center
Accelerate Cancer Education (ACE)
Summer Research Experience Program



The University of Kansas Cancer Center's ACE program provides students:

- A rewarding, immersive, in-person research experience
- Development in leadership and interpersonal skills
- One-on-one mentoring
- Transportation and lunch
- \$2,600 stipend

Students must:

- Be at least 16 years of age as of June 1, 2023.
- Currently be a junior or senior at a high school located in Wyandotte County, KS.
- Be available to work June 12 -July 21, 9 a.m. -4 p.m., Monday -Thursday, 9 a.m. -12 p.m. Friday.
- Participate in a multi-cultural program 12 -3 p.m. on Fridays.
- Be legally eligible to work in the U.S.
- Have at least a 3.0 GPA.

Applications due
by 11:59 PM on
May 19, 2023!

Apply
Here:



Students who are underrepresented minorities are encouraged to apply. The following racial and ethnic groups have been shown to be underrepresented in biomedical research: Blacks or African Americans, Hispanics or Latinos, American Indians or Alaska Natives, Native Hawaiians, and other Pacific Islanders.

Ages
6-15



Kids on Campus is a summer camp program offered at Kansas City Kansas Community College (KCKCC) for school-aged children with weekly fun-filled themed programming and a field trip at the end of the week. Campers will divide into small groups by age, participating in age-appropriate activities. Breakfast and snack is provided by Catholic Charities and lunch is served by the Kansas City, Kansas Public Schools (KCKPS - USD 500) through the Kansas Summer Food Service Program, an equal opportunity provider.

Campers must wear comfortable appropriate clothing and closed-toe shoes to participate in various camp activities and field trips. Campers must be signed in at drop-off between 8:45 and 9:00 a.m. and signed out at pick-up between 3:20 and 3:30 p.m. at KCKCC's Field House. Adults must present their ID at pick-up and campers will only be released to those listed on the authorized pick-up list added to the registration. Water bottles are provided to campers and drinking is encouraged by camp counselors throughout the day. Sunscreen is available in the staff's first aid kits and campers are asked to re-apply multiple times a day during sun exposure. Kids on campus will promote physical movement, social interaction, educational opportunities, leadership building, personal growth and creativity.

KCKCC KIDS ON CAMPUS CAMPS:

Week One: Multicultural Camp June 19-22

Week Two: Stem Camp June 26-29

Week Three: Nature Go Green July 10-13

Week Four: Art Camp July 17-20

Week Five Performance Camp: July 24-27

Enroll by May 31st, 2023

100\$ Per week of camp

Register
Here:



Health Science Academy

**Ages
13-18**



\$750 STIPEND PROVIDED

- ✓ Are you interested in going into a STEM or health career?
- ✓ Do you enjoy labs and dissections?
- ✓ Do you enjoy poetry and art?

Who?

- USD 500 students entering 9th-12th grades in Fall 2023
- Students must have a minimum 2.8 GPA

When?

- Mondays-Fridays from June 19th through July 21st from 9am-3pm

Where?

- University of Kansas Medical Center and the Kansas City Kansas Community College
- Transportation will be provided

Apply online at: www.kcksaturdayacademy.org

Application Due: June 1st at 11:59PM

For Additional Information Contact:

Mija Jones

m758j955@kumc.edu

913-627-4357



Apply here:





LEAD UP Summer Academy

Three-day college campus visit affords LEAD UP Achievers the opportunity to receive academic and college prep training, experience resident life by residing in the dorm and eating in the cafeteria, and receive guidance and coaching from KU LEAD UP Advisory Board Members who are college staff, faculty, or students. In the Summer Academy, youth participate in sessions and gain insight from experts who work in student advising, admissions, financial aid, student support services, student money management, Trio programs, athletics, and many other departments. Youth also participate in recreational activities both on and off campus.

LEAD UP ENRICHMENT SESSIONS

LEAD UP is a youth achievement program that provides college readiness support and academic tutoring for middle and high school students. It is supported by the LEAD UP Student Organization in partnership with ThrYve through the University of Kansas.

**Thursdays from 3:00 to
4:30 pm (CST) online**

**Zoom room:
97142922746
Password: 1234**

Sign up
here



LEAD UP TUTORÍAS ACADÉMICAS

LEAD UP es un programa de acompañamiento académico juvenil que brinda apoyo en preparación universitaria y tutoría académica a estudiantes de secundaria y preparatoria.

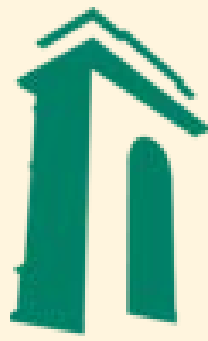
Cuenta con el apoyo de la Organización Estudiantil LEAD UP en asociación con ThrYve a través de la Universidad de Kansas.

**Jueves de 3:00 a 4:30
pm (CST) en línea**

**Sala de Zoom:
97142922746
Contraseña: 1234**

Regístrate
aquí





ROSEDALE
DEVELOPMENT ASSOCIATION

Ages
14-17

Rosedale Future Professionals



Rosedale Future Professionals (RFP) is a program that focuses on financial literacy, advocacy, and so much more for youth from ages 14-17. This is a short yet impactful program!

RFP shows youth how to plan for their financial futures, exposes them to different career fields and more. Youth will receive \$20 for each session that they attend.

Ages
5-13



Rainbow Summer Program



The Rainbow Summer Program is a five-week long daily summer program, we use curriculum from Junior Achievement, LoveNotes, 4-H Youth Development and more. The program focuses on reading, nutrition, advocacy, financial literacy, and wellness for youth who have completed grades K-8! This year we have 100 spots for youth on a first-come, first-serve basis.

There will be an activity fee of **\$300** per child with scholarship options available!

SUMMER CAMP LOOKING FOR TEAM LEADERS!

Ages
14-17

ARMOURDALE SUMMER CAMP TEAM LEADERS

We are seeking for youth volunteers ages 14 to 17 to be part of our summer youth employment-volunteer opportunity!

4 weeks in June hours available
Monday - Thursday 9am - 2pm

You must inquire no later than Monday, May 23rd!

What will I get?

- Job training
- Coaching
- Leadership exposure
- Incentive \$



e-mail us:



Community Programs

Ages 14 -18

PRO X

A program connecting students to professional experiences that prepare them for whatever comes

**WHAT ARE
YOU GOING
TO DO WITH
YOUR
POTENTIAL?**

THE PRO X JOURNEY

A few reasons to join:

Build skills

Build essential skills needed for life after high school.

Cash

Get paid \$1,250 for your hard work.

Options

Explore your passions and career options through real world experiences.

APPLY AND LEARN MORE HERE:



YMCA SUMMER CAMPS

Ages 11-18

YVC SUMMER OF SERVICE

Youth ages can make a difference in their community this summer through service projects that are rewarding, fun and educational through the Youth Volunteer Corps of Greater Kansas City's Summer of Service program.

For more information, contact Danielle Small, 816.384.3822 or kansascity@yvc.org.

CAMP WOOD YMCA OVER NIGHT CAMP

Ages 7-17

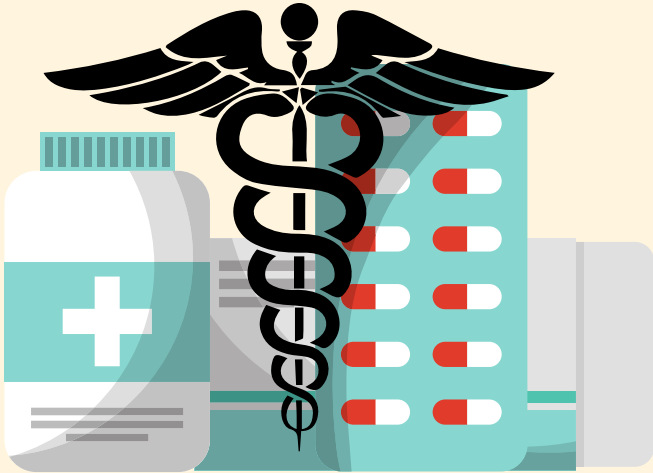
Tucked within the beautiful Flint Hills of Kansas, Camp Wood YMCA gives youth an opportunity to participate in life-changing, outdoor experiences that foster healthy decision-making, lasting friendships, skill development, and strengthened values in a safe, friendly environment. Traditional and teen camps are available all summer, as well as specialty camps centered on the culinary arts, construction, leadership and outdoor activities like horseback riding.

ALL THAT AND MORE FROM THE YMCA



**Scan here to
register and
learn more**

Ages 14-18



Pharmacy Camp

Engage with current faculty and practicing pharmacists, view experiments in the lab and interact with current students to find out what it's like to be a pharmacy student at UMKC.

June 23rd at UMKC Downtown health Sciences
District Campus

Cost - \$40 per camper.

Camper costs include lunch, t-shirt, compounding
experience, and incidentals.

Register:



Questions? Contact us by phone at 816-235-1613 or
pharmacy@umkc.edu.

**Ages
14-18**



UMKC



Cybersecurity Summer Camp for High School Students

July 24-28 or July 31-August 4, 2023, UMKC Volker Campus

Website:

<https://sse.umkc.edu/academics/k-12-programs/gencyber-camp.html>

Email: dxu@umkc.edu

Why Cybersecurity?

- In-person, hands-on
- Learning cybersecurity will keep you safe from hackers and cybercriminals
- Complimentary breakfast, lunch, and parking
- No prior cybersecurity knowledge is required
- Cybersecurity is an exciting career prospect

Apply Here:



Cybersecurity's real impacts

Apply now! Extend beyond the digital world

Camp Staff

Dr. Dianxiang Xu, Computer Science professor and cybersecurity researcher, UMKC

Dr. Yugyung Lee, Computer Science professor and cybersecurity researcher, UMKC

Dr. Farid Nait-Abdesselam, Computer Science professor and cybersecurity researcher, UMKC
Mrs. Deanna Soukup, Computer Science teacher, Lee's Summit R-7 School District, MO
Several teaching assistants

All Ages



Strength and Condition Training Monday-Friday 3pm-7pm



Learn More Here:

1801 White Ave
Kansas City, MO 64127



Three Trails
CAMP & RETREAT CENTER

Ages 13-17

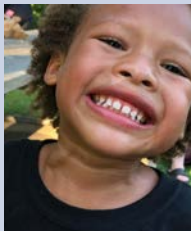
Teen camp (July 10-14th) is an opportunity for those ages **13-17** to gather and build friendships with like-minded young people in a Christ-centered environment. Together we will engage in fun outdoor activities while also learning how we can create a ripple effect and positively influence the world around us.



The scripture focus is found in John 7:38 and fits with this summer's camp theme "Making Waves".



Teens will be given the opportunity to participate in activities such as swimming, rock wall, archery, dance, art, and more. Come ready to learn, get messy, and have a great time!



Learn More
Here:



Free Driving Courses

800 N. 5th Street
Kansas City, KS
66101



Ages 15-18

Motor vehicle crashes are the leading cause of death for ages individuals **15 to 18** in Kansas. Despite this sobering statistic, Driver's Education was removed from the schools in the 1990's due to budgetary cuts. At PAL, students learn smart driving skills directly from police officers through this course that is certified by the state of Kansas. Officers teach the students the basic class and road courses, and students are required to successfully pass both. Safe drivers mean safe roads for us all! To date, nearly 100 students have already successfully completed this vital course. (Kansas Residents Only).

Learn more and get
involved Here:





KCKPD YOUTH ACADEMY

Ages
12-15

June 12-16, 2023

Hosted at
South Patrol
2200 Metropolitan Ave.
9 AM to 2 PM Daily

July 24-28, 2023

Hosted at
Training Academy
7250 State Ave.
9 AM to 2 PM Daily



Topics covered: patrol procedures, evidence collection, criminal investigations, conflict resolution, interrogations, tactical team & more!

This one-week summer program for youth ages 12-15, is a fun, interactive learning experience designed to:

- familiarize youth with the many aspects of police work
- promote greater understanding between youth and law enforcement
- promote safety skills & tools needed to peacefully deal with conflict

Applications are available at
South, East, and West Patrol
or by calling/emailing:
(913) 573-6139
RBOSTON@KCKPD.ORG

Para español (913) 573-6277

FARMERS ON THE RISE

YOUTH APPRENTICESHIP



KCFARM SCHOOL AT GIBBS ROAD

Ages 4-18

For five years, we've brought high school youth on-farm, hands-on during the school year for job skills training;

we've hosted Jr. Growers summer camp for 9-12 year olds; Ag Explorers for 4-8 year olds; and in 2022, we launched Farmers on the Rise, our Youth Farm Apprenticeship program for teens aged 13-17, providing a paid opportunity to thirteen area youth to develop skills in agriculture, team-building practice, and workforce experience.

Taught by farmers, this apprenticeship is perfect for someone considering a career in food production or local food systems.

Farmers on the Rise is for individuals aged 13-17 years old (school grades 7th-12th), looking for employment and seeking to develop agricultural skills.

The apprenticeship is a junior farm crew position and is paid.

**Applications are now open.
Scan the QR code to apply!!**





**SAFETY FIRST
COURTESY ALWAYS**

Ages 16-18

Summer Job Program

This teen program is designed to be a initial stepping stone toward a career in public service. These juveniles are expected to be a community role model and exemplify the high ethical and moral standards set by the police department while participating in law enforcement observations and supporting sworn and non-sworn members of the KCKPD. This program is limited to High School students in good standing.

Point of Contact: Officer Elaine Moore (913) 573-8720
edmoore@kckpd.org

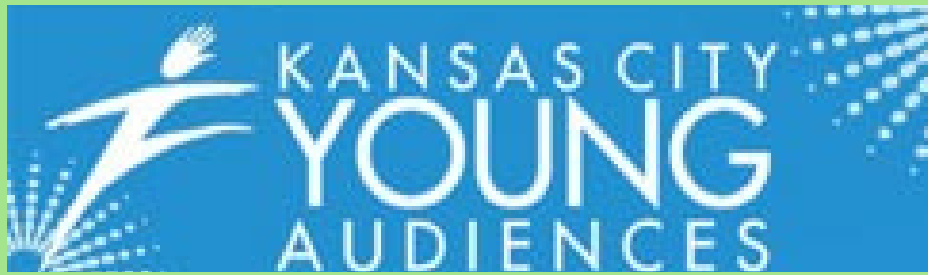
Today a Reader, Tomorrow a Leader Program

Ages 5-10



Today a Reader, Tomorrow a Leader Program- This initiative was designed to engage with children and inspire them to learn. Once a month, COPPS and MPS officers respond to Parker Elementary School and read from selected books to the Kindergarten, First and Second grade students. The selected reading always supported whatever character trait the school was teaching for that month. These sessions usually last about ½ hour, and always end with a question and answer session.

Point of Contact: Officer Elaine Moore (913) 573-8720
edmoore@kckpd.org



Ages
5-12

5601 Wyandotte, Kansas
City, MO 64113

Contact: Kara Armstrong

Ph: (816) 531-4022

Email:

KArmstrong@KCYA.org

For more information,
scan the QR code

Learn More Here:



KCYA Art Sampler Camps

Ages
12-17



Ailey Camp is about growing up strong, healthy, and ready to take on the world, appreciation of the cultural and recreational resources in Kansas and Missouri and making use of them, hard work, having fun, developing self-discipline of the body and the mind, learning new things about one's self, learning about others, and learning about our world.

Campers meet Monday- Friday

7am-2:45pm

**More Information to be
announced here:**



Ages 5-17



Camp Hope is a traditional summer camp experience for youth who have, or have had, cancer. It has been held yearly since 1983. Unique in its ability to assist campers' needs through a fully functional, on-site medical team, Camp Hope campers are able to enjoy traditional summer camp activities including, but not limited to, swimming, bowling, miniature golf, fishing, hiking, archery, arts & crafts, and more. It is a time for them to be around peers who have, or have had, similar life-altering illnesses and to be in a setting that lets them forget about their diagnosis while they have one of the best weeks of their lives.

Camp Hope is held the third full week of June each summer. Most years it starts on Father's Day.

Camp hope is **FREE** for attendees

Learn more here:



**urban
scholastic
center**

FROM HERE FOR HERE

All
Ages

Chess and Videogame Club

10am-12pm

Every 1st and 3rd Saturday

The Urban Scholastic Center

2900 Minnesota Ave., Kansas City, KS 66102

For volunteer opportunities and more, scan the QR code below



Community Resources

Food Pantries in Wyandotte County

Catholic Charities Wyandotte County

600 Minnesota Ave,
Kansas City, KS 66101

Wednesday through
Thursday 9AM- 4PM

(913) 621-3445



Bridge of Hope Community Church Food Pantry

1925 N 11th St, Kansas
City, KS 66104

Monday through Friday
10AM-12PM

(913) 499-6741



MCRC Food Pantry 1130 Troup Ave, Kansas City, KS 66104

Monday through Friday
10AM-5PM

(913) 621-4111



Giving Hope Food Pantry

6640 State Ave, Kansas
City, KS 66102

Tuesday: 6-7:30 PM
Saturday: 9AM-1 PM

(913) 291-9031



VIBRANT HEALTH



Vibrant Health Wyandotte
21 N 12th St 300
Kansas City Kansas 66102

Make an Appointment:

913-342-2552

appointments@vibranthealthkc.org



Equitable access to healthcare is a human right

The patient is at the core of everything we do

We offer respect, support, and empathy toward everyone

There is great power in our combined efforts

We celebrate the differences in who we are,
what we've experienced, and how we think

We embrace innovation and change, striving to
be better every day



Unused monthly food benefits will remain on your Kansas Benefits Card account for 9 months.

How Soon Can I Get Help?

If you have little or no income and need help quickly, tell your local DCF Service Center. You may be able to get assistance in seven days. Otherwise, your application will be processed within 30 days.

Are There Any Other Food Assistance Programs Available?

Yes. DCF has a food commodity program. For more information about where to pick up commodity food in your county, call your local DCF Service Center.

What Other Help Can I Get?

If you are eligible for food assistance, you may also be eligible for cash and child care assistance. Check with your local DCF Service Center for more information.

Questions?

If you have any questions, please call or visit your local DCF Service Center, call toll-free 1-888-369-4777, or visit us online at www.dcf.ks.gov.

TO REPORT FRAUD, CALL
1-800-432-3913
ALL CALLS ARE CONFIDENTIAL



GENERATING OPPORTUNITIES TO ATTAIN LIFELONG SUCCESS

Need help finding a JOB?

If you're receiving food assistance, the program may provide you with the training and support you need to get a job with a company that cares about your success.

THE OPPORTUNITIES ARE OUT THERE.

Get started today.

1-888-369-4777

Contact your County Extension Office for free classes on how to:

- Stretch your food dollar
- Choose healthy food for your family
- Cook easy meals in a hurry
- Keep your food safe

To locate a County Extension Office nearest you, visit www.ksre.k-state.edu/about/stateandareamaps.html or call 1-855-476-2733.



The State of Kansas is an equal opportunity provider.



Economic and Employment Services

Rev. 9-22

ES-2007

KANSAS FOOD ASSISTANCE PROGRAM



What is the Kansas Food Assistance Program?

The Food Assistance Program (formerly known as the Food Stamp Program) helps people with little or no income. It provides benefits to eligible individuals and families to buy nutritious food, even vegetable plants and seeds, from local grocery stores.

Who Is Eligible for the Program?

- Persons who work but have a low income and those who do not work may be eligible.
- You and anyone who lives in your household and eats with you. Household members do not have to be related to be considered part of the household.
- Able-bodied persons, age 18-49, without children, who work or attend an approved training program 30 hours per week, or qualify for an exemption from work activity.
- Persons age 60 and older and persons with disabilities. Disabled persons include those receiving Supplemental Security Income, Social Security disability payments, certain veterans disability payments, disability retirement benefits for a permanent disability, and railroad disability.

How Do I Purchase Food with My Benefits?

Monthly benefits are provided on a Kansas Benefits Card, or EBT card, that looks and acts like a debit card. Simply swipe your card at

the store when purchasing food, and the cost is electronically subtracted from the card account. You can now also use your EBT card to purchase groceries online at Amazon and Walmart.

How Many Resources Can I Have and Still Receive Food Assistance?

You can have up to \$2,750 in resources. If one person in your household is age 60 or older or disabled, you can have up to \$4,250 in resources. Resources include cash and checking/savings account balances. Certain resources like your home and car are not counted.

Do I Need to be a U.S. Citizen to Receive Food Assistance?

U.S. citizens and certain legal non-citizens are eligible for food assistance benefits when other eligibility requirements are met. If you are not eligible due to immigration status, your legal resident or citizen children may still qualify. Citizenship verification or non-citizen documentation is required for the individuals for whom you are applying.

How Do I Apply?

Applying for assistance is easy. Applications are available at your local DCF Service Center or Access Point, or they can be requested by calling toll-free 1-888-369-4777. Online applications are available at www.dcf.ks.gov. You can leave parts of the application blank if you do not understand how to complete them. Return your application to DCF and someone will contact you to set up an interview. You may request that your interview be held in the office or over the phone.

What Information Do I Need to Give DCF to Apply for Food Assistance?

You may need to provide the following:

- Identification, such as a birth certificate or driver's license
- Non-citizen documentation, if you are not a United States citizen
- Social Security number for you and any household members who are applying for food assistance
- Proof of earned and unearned income
- Proof of assets, such as checking and savings account balances

If I am Eligible, How Much Can I Get?

Benefit amounts are based on household size and income after deductions. If eligible, you will receive a Kansas Benefits Card to purchase groceries.

How Long Can I Have Assistance?

There are no time limits, as long as you meet the eligibility requirements.



Los beneficios alimentarios mensuales no utilizados permanecerán en su Tarjeta de Beneficios de Kansas por un período de 9 meses.

¿Cuán rápido puedo obtener ayuda?

Si tiene un ingreso mínimo o no tiene ingresos y necesita ayuda de forma rápida, infórmelo en el Centro de Servicios de DCF local. Es posible que pueda obtener asistencia en siete días. De lo contrario, su solicitud se procesará dentro de los 30 días.

¿Existe algún otro programa de asistencia alimentaria disponible?

Sí. DCF tiene un programa de productos básicos alimenticios. Para obtener más información acerca de dónde recoger los productos básicos, llame a su Centro de Servicios de DCF local.

¿Qué otro tipo de ayuda puedo obtener?

Si califica para la asistencia alimentaria, es posible que también califique para asistencia financiera y de cuidado infantil. Consulte con su Centro de Beneficios de DCF para obtener más información.

¿Tiene preguntas?

Si tiene preguntas, llame o visita su Centro de Beneficios de DCF local, llame a la línea gratuita 1-888-369-4777, o visítenos en línea en www.dcf.ks.gov.

PARA DENUNCIAR UN FRAUDE, LLAME AL
1-800-432-3913
TODAS LAS LLAMADAS SON
CONFIDENCIALES



GENERAR OPORTUNIDADES PARA TENER ÉXITO A LO LARGO DE LA VIDA

¿Necesita ayuda para encontrar un empleo?

Si está recibiendo asistencia alimentaria, el programa puede brindarle la capacitación y el soporte que necesita para obtener un empleo con una empresa a la cual le importe su éxito.

LAS OPORTUNIDADES SE ENCUENTRAN ALLÍ
Empiece hoy.

1-888-369-4777

Contacte a la Oficina de Extensión del Condado para obtener clases gratuitas sobre:

- Cómo aprovechar mejor sus dólares destinados a la alimentación
- Seleccionar alimentos saludables para su familia
- Cocinar comidas fáciles de manera rápida
- Mantener sus alimentos de forma segura

Para encontrar la Oficina de Extensión local más cercana, visite www.ksre.k-state.edu/about/stateandareamaps.html o llame al 1-855-476-2733.



El estado de Kansas es un proveedor que ofrece igualdad de oportunidades.



Departamento de
Menores y Familias
Servicios Económicos y de Empleo

Rev. 9-22

ES-2007

PROGRAMA DE ASISTENCIA ALIMENTARIA DE KANSAS



¿Qué es el Programa de Asistencia Alimentaria de Kansas?

El Programa de Asistencia Alimentaria (antes conocido como Programa de Cupones para Alimentos) ayuda a las personas con bajo ingresos o sin ingresos. Brinda beneficios a personas y familias elegibles para comprar alimentos nutritivos, semillas y plantas de vegetales, de tiendas locales.

¿Quién es elegible para el Programa?

- Pueden calificar personas que trabajan, pero tienen un ingreso bajo o aquellos que no trabajan.
- Usted y cualquiera que viva en su hogar y coma con usted. Los miembros del hogar no tienen que estar relacionados para ser considerados como parte del hogar.
- Personas físicamente capaces de 18 a 49 años, sin hijos, que trabajan o asisten a un programa de capacitación autorizado 30 horas a la semana, o califican para una exención de la actividad laboral.
- Personas mayores de 60 años y personas con discapacidades. Personas con discapacidades incluye aquellas que reciben Seguridad de Ingreso Suplementario, pagos por discapacidad del Seguro Social, ciertos pagos por discapacidad de los veteranos de guerra, beneficios por retiro por discapacidad permanente y discapacidad ferroviaria.

¿Cómo compro alimentos con mis beneficios?

Los beneficios mensuales se brindan a través de la Tarjeta de Beneficios de Kansas, o la tarjeta de EBT, que se ve y funciona como una tarjeta de débito. Simplemente deslice su tarjeta en la tienda al

comprar alimentos, y el costo se debitará automáticamente de la cuenta de su tarjeta. Ahora también puede usar la tarjeta de EBT para comprar alimentos en línea, en Amazon y Walmart.

¿Cuántos recursos puedo tener e igual así recibir la asistencia alimentaria?

Puede tener hasta \$2750 en recursos. Si una persona en su hogar tiene 60 años o más o es discapacitada, puede tener hasta \$4250 en recursos. Los recursos incluyen dinero en efectivo y saldos de cuentas corrientes/de ahorro. Ciertos recursos como su vivienda y automóvil no cuentan.

¿Es necesario ser ciudadano estadounidense para recibir asistencia alimentaria?

Los ciudadanos estadounidenses y ciertos no ciudadanos legales califican para recibir beneficios de asistencia alimentaria cuando se cumplen otros requisitos de elegibilidad. Si no califica debido a su estado de inmigración, es posible que sus hijos ciudadanos o residentes legales sí lo hagan. Se requiere verificación de ciudadanía o documentación de no ciudadanía para las personas que están presentando la solicitud.

¿Cómo presento una solicitud?

Solicitar asistencia es fácil. Los formularios de solicitud se encuentran disponibles en su Centro de Servicios de DCF o Punto de Acceso local, o pueden solicitarse llamando de forma gratuita al 1-888-369-4777. Las solicitudes en línea se encuentran disponibles en www.dcf.ks.gov. Puede dejar partes de la solicitud en blanco si no comprende cómo completarla. Entregue su solicitud a DCF y alguien lo contactará para programar una entrevista. Puede solicitar que su entrevista sea en la oficina o por teléfono.

¿Qué información debo brindarle a DCF para solicitar asistencia alimentaria?

Es posible que deba proporcionar la siguiente información:

- Identificación, como un certificado de nacimiento o licencia de conducir.
- Documentación de no ciudadanía, si no es ciudadano estadounidense.
- Número de seguro social suyo y de los miembros de su familia que solicitan asistencia alimentaria.
- Prueba de ingresos o falta de ingresos.
- Prueba de activos, como saldos de cuentas de ahorro o cuentas corrientes.

Si califico, ¿cuánto puedo obtener?

Los montos de los beneficios se basan en el tamaño del núcleo familiar y el ingreso después de las deducciones. Si califica, recibirá una Tarjeta de Beneficios de Kansas para comprar alimentos.

¿Por cuánto tiempo puedo tener asistencia?

No hay límite de tiempo, siempre que cumpla con los requisitos de elegibilidad.



**KCFARM
SCHOOL**
AT GIBBS ROAD

Learn More Here:



We provide plant starts, seeds, compost, supplies, mentorship, community, and solidarity. Through Let's Grow Wyandotte, we help people grow food; and by growing together, we create tomorrow better than today.

KC Farm School provides information on selecting your garden site, planning your garden space, deciding what to grow when and how, how to start your own seeds, how to harvest, how to save seeds, and how to prepare food from the garden.

We also host hands-on opportunities to learn how to build a compost pile, care for bees, tend chickens, and even grow native plants from local experts.

Launched in 2020 in response to the pandemic, we've worked with 400 households to grow food in backyards, front yards, in pots, on patios, in straw bales, and climbing up fences across Wyandotte County, all increasing food sovereignty in our community.

This year, our team has planned multiple on-farm workshops, a garden tour, volunteer opportunities in the greenhouse a community-wide Fall workshop, shared meals, and several informal gatherings.

The program is FREE to all Wyandotte County residents.

If you're a resident of another county and want to join, let us know! We can arrange a pay-what-you're-able sliding scale.

Let's
GROW
Wyandotte!

Vamos a
CULTIVAR
Wyandotte!

Become A Lifeguard at Parkwood Pool

Parkwood is always looking for amazing lifeguards to assist at Parkwood Pool. Swimmers must be a minimum of 15 years old with the ability to pass a pre-course swimming skills test to qualify.

Apply Here:



Ages 15+



PARKWOOD POOL

950 Quindaro Blvd 913-551-0402

Find More
Information Here:



Pool Hours:
Monday: Closed
Tuesday-Saturday: 12:00pm - 6:00pm
Sunday: 2:00pm - 6:00pm

Admission- \$1.00
\$0.75 for groups of 20 or more
Purchase a Pool Pass, 6 visits for \$5.00

Parkwood Pool Partnership Programs

Kansas City, Kansas Public School (KCKPS) Free Lunch Program

KCKPS Nutritional Services will be serving **free** lunch and a snack Tuesday through Friday at Parkwood Pool. The lunches will begin on Tuesday, June 7 and end Friday, July 29.

Learn To Swim Program

The YMCA of Greater Kansas City, Kansas City Kansas Public Schools and the Unified Government of Wyandotte County and Kansas City, Kansas are launching a Learn to Swim program. The program, funded by a grant from Warner Media, will provide swim lessons at no cost to students in the Kansas City, Kansas, Public Schools.

Swimming Lessons at Parkwood Pool: YMCA/ GEHA

Through a partnership with the YMCA of Greater Kansas City, 200 Wyandotte County youth will be receiving swimming lessons at Parkwood Pool from May 31st- July 15th, through a generous sponsorship from GEHA.

More information about these partnership programs will be available at Parkwood Pool.



FREE SPRAY PARKS

Eisenhower Park
behind
Eisenhower
Middle School
2901 N 72nd St

Pierson Park
1800 S 55th

Open 24/7

(913) 573-8327

Heathwood
Park
N 10th &
Parallel Pkwy

Children of all ages and abilities are able to enjoy sprays of water from brightly colored towers, loops and hoops with activators that are low enough for all to reach. Zero depth entry will allow for handicap accessibility. Water is controlled by a computer, so when no one is around the water is shut off. When touched, the water begins to flow.

Learn More Here:



The ThrYve System Advisory Board

The Systems Advisory Board meeting is open to youth and their parents. It is made up of many organizations throughout the city. Find out what's happening in our community. You have a voice! We meet virtually from 3:00-4:30 PM. Contact ThrYve for a meeting link if you are interested in attending
Look Forward to seeing you!

Upcoming Virtual Dates: June 6th, Sept. 5th and Dec. 5th

ThrYve youth, Let us know what summer activity you choose to join!

email: thryve@ku.edu

Call: 913-897-8543

@wethryve  



KU THE UNIVERSITY OF
KANSAS